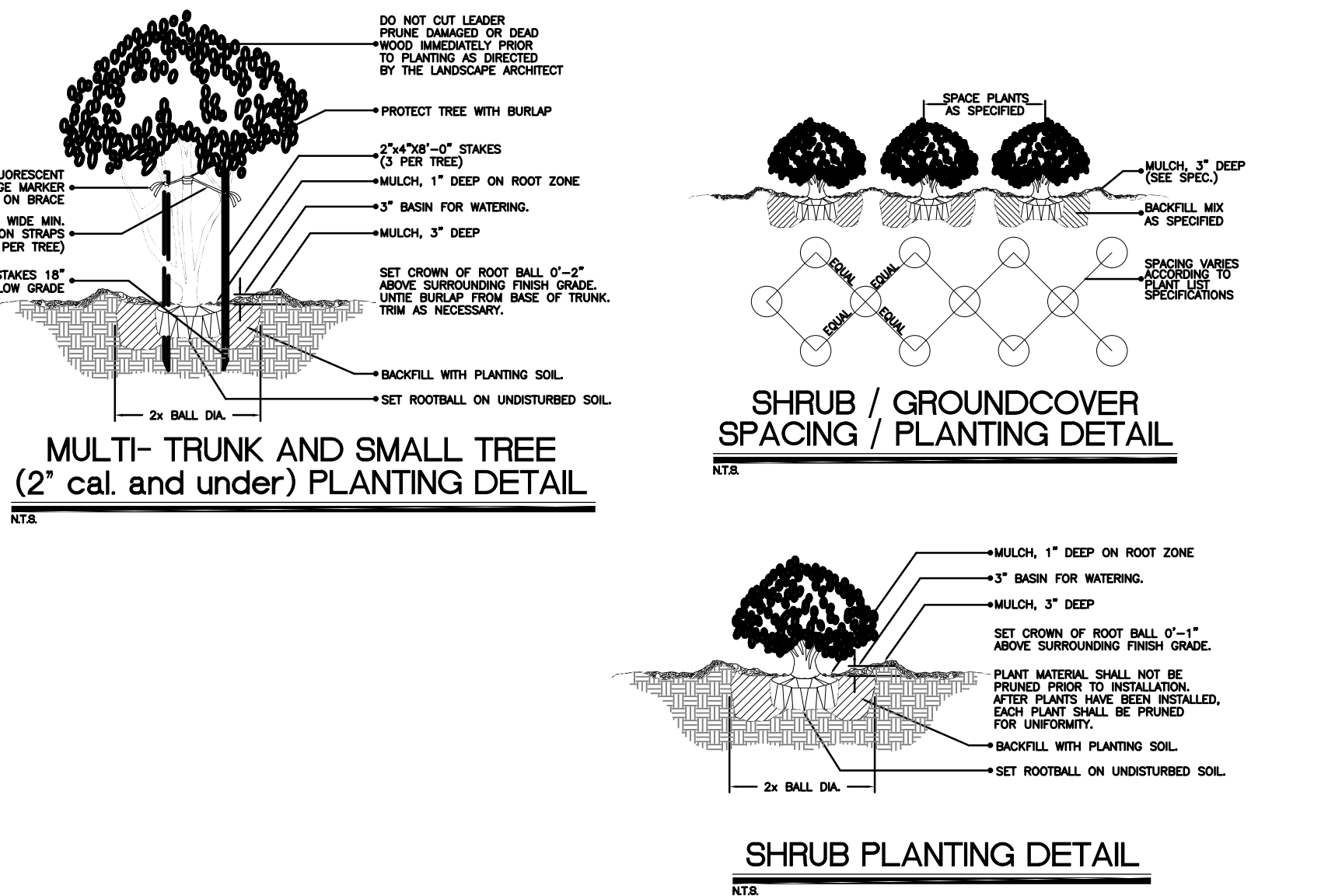
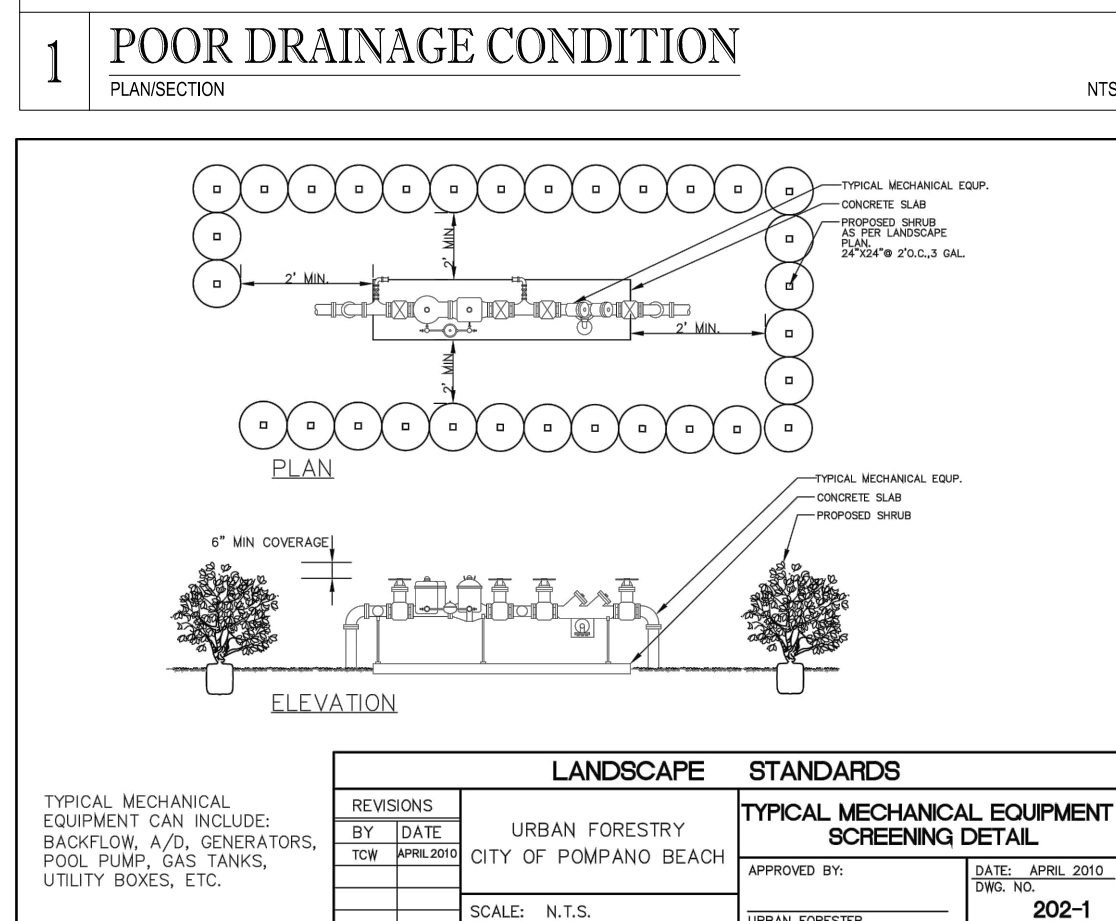


TREES	QTY	COMMON NAME	BOTANICAL NAME	SPECIFICATIONS	CAL/DBH	HEIGHT	SPREAD	NATIVE	XERIC	REMARKS
BS	9	Gumbo Limbo	Bursera simaruba	B & B	3"Cal	16' Ht	5-6'	Yes	High	4' CT
CD	5	Pigeon Plum	Coccoloba diversifolia	B & B	3"Cal	16' Ht	5'	Yes	High	4.5' CT
CE2	6	Silver Button Wood	Conocarpus erectus sericeus	25 gal	2"Cal	12' Ht	3-4'	Yes	Low	
CS	4	Orange Geiger Tree	Cordia sebestena	25 gal	2"Cal	12' Ht	5'	Yes	High	4' CT
LI	11	Crape Myrtle	Lagerstroemia indica 'Muskogee'	25 gal	2"Cal	12' Ht	5'	No	High	4' CT
LL	7	Glossy Privet	Ligustrum lucidum	25 gal	3"Cal	10' Ht	4'-5'	No	High	multi
QV	35	Southern Live Oak	Quercus virginiana	B & B	4"Cal	16' Ht	5-6'	Yes	High	6' CT
SPR	2	Cabbage Palmetto	Sabal palmetto	B & B		varies	10'	Yes	Medium	
TC	9	Yellow Trumpet Tree	Tabebuia caraiba	B & B	3"Cal	16' Ht	5-6'	No	High	4' CT
TH	7	Pink Tabebuia	Tabebuia heterophylla	FG/B&B	4" Cal.	16' Ht	5-6'	No	High	6' CT

SHRUBS	QTY	COMMON NAME	BOTANICAL NAME	SPECIFICATIONS	SPACING	HEIGHT	SPREAD	NATIVE	XERIC	REMARKS
CH3	389	Red Tip Cocoplum	Chrysobalanus icaco 'Red Tip'	NA	30"	36"	36"	Yes	High	Full to base
CHH	10	Red Tip Cocoplum	Chrysobalanus icaco 'Red Tip'	NA	24"	24"	24"	Yes	High	Full to base
CRI	9	'Queen Emma' Crinum	Crinum augustum 'Queen Emma'	15 gal	As Shown	48"	48"	No	Medium	Full to base
VIA	80	Mirrorleaf Viburnum	Viburnum awabukia	-	42"	72"	36-42"	No	High	Full to base
VIB	148	Sandankwa Viburnum	Viburnum suspensum	NA	24"	24"	24"	No	High	Full to base

GROUND COVERS	QTY	COMMON NAME	BOTANICAL NAME	SPECIFICATIONS	SPACING	HEIGHT	SPREAD	NATIVE	XERIC	SPACING	REMARKS
FIM	227	Green Island Ficus	Ficus microcarpa 'Green Island'	n/a	18"	14-16"	14-16"	No	Medium	18" o.c.	
IVS	111	Dwarf Schillings Holly	Ilex vomitoria 'Schillings Dwarf'	n/a	16"	14-16"	14-16"	Yes	High	18" o.c.	
LAN	350	Gold Mound Lantana	Lantana camara 'Gold Mound'	n/a	18"	12-14' Ht.	14-16"	Yes	High	18" o.c.	sterile species
LIR	904	Lily Turf	Liriope muscari	n/a	16"	12-14"	10-12"	No	High	12" o.c.	Full clumps



PZ22-12000027
10/5/2022